

# AUTHENTICATION IN ART

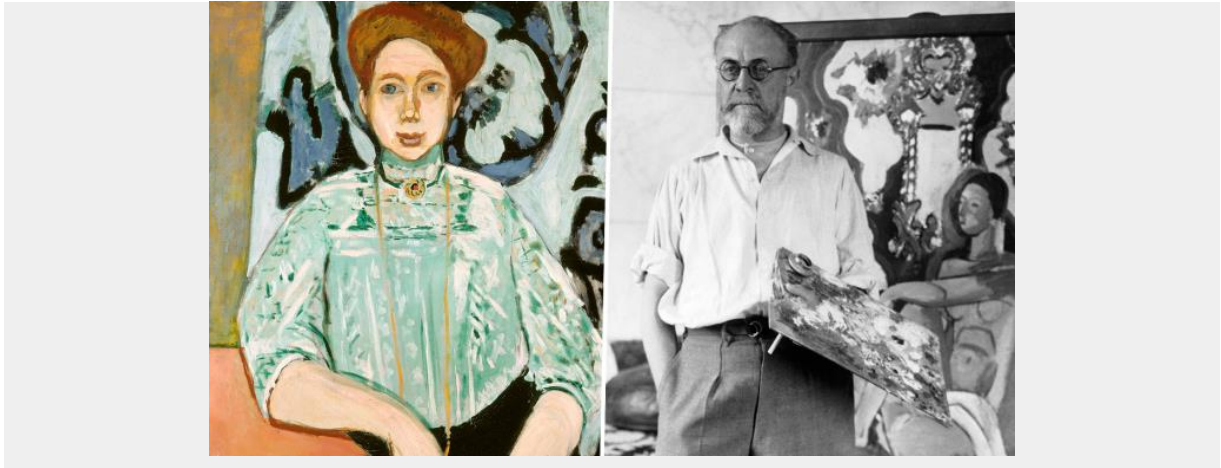
AiA Art News-service



## Battle rages for 'looted' Matisse

David Sanderson, Arts Correspondent

March 4 2019, 12:01am, The Times



The Portrait of Greta Moll was painted in 1908 by Henri Matisse NATIONAL GALLERY LONDON/PA; GETTY IMAGES

The National Gallery is facing a showdown with the United States Supreme Court over a Henri Matisse portrait “stolen” in the ruins of Berlin after the Second World War.

Descendants of Greta Moll, whom Matisse had been commissioned to paint in 1908, have appealed to the highest court in the US for either a £20 million-plus payout or the return of the painting from the gallery, which has owned it since 1979.

It is the last opportunity for the descendants to reclaim the painting after the British authorities said that because it disappeared amid Soviet Union-inflicted chaos rather than Nazi chaos, it had no responsibility to return a national asset.



The National Gallery acquired the work in 1979<sup>ALAMY</sup>